



Work Sector
Client
Location
Cost
Date completed

Residential
Badgers View Farm
Chilterns
Undisclosed
TBC

Our London office has recently received planning permission for 'Badgers View Farm', a unique one-off residence for a private Client in the Chilterns. The site, situated near Chinnor in Oxfordshire, enjoys fantastic views of the Chiltern Valleys. We were asked to design a new 4000 sqft house with a contemporary appearance and a distinctive 'wow' factor both inside and out.

The Client has a geological background and asked us to take inspiration from the physical formation of the landscape in the area. With this in mind, the design of the house draws from the Cretaceous chalk which underlies the whole of the Chilterns itself as well as vast areas of Southern England, with its most famous outcrop at the White Cliffs of Dover.

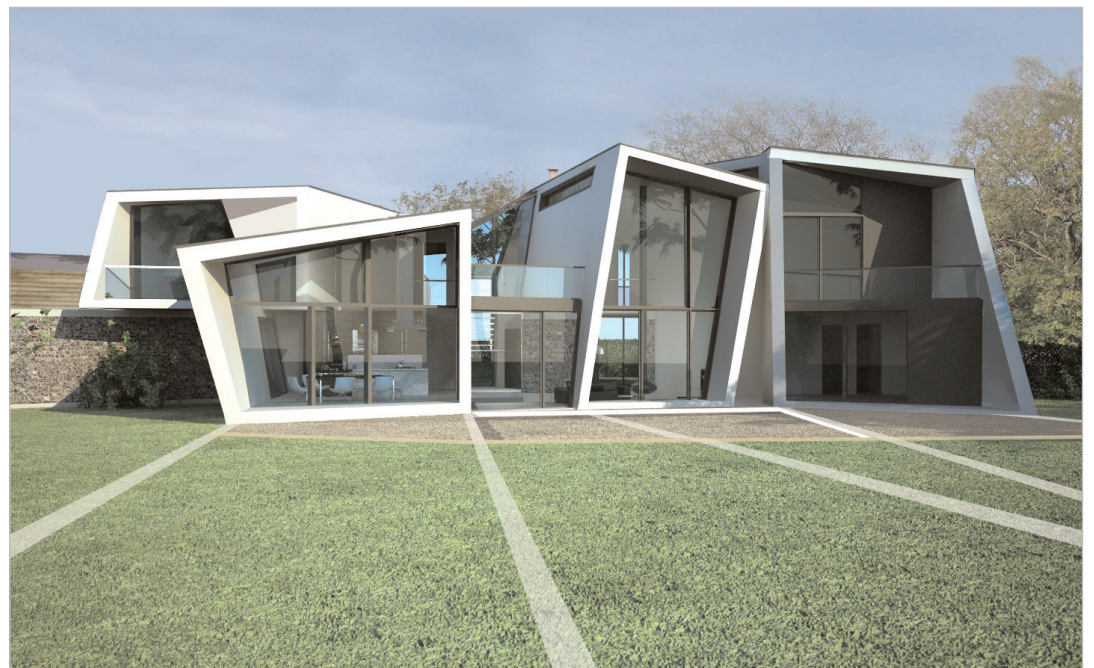
In many places the chalk strata are uplifted, folded and buckled and it is precisely this that motivates the design in which blocks of rock are juxtaposed and impinge one another. The house is composed of white rendered blocks which link together over a traditional 'knapped flint wall'.

Large areas of glazing overlook the spectacular views and establish a physical connection between the building interior and the wider landscape itself.

The design will incorporate the latest energy saving technologies including the use of a ground source heat pump to provide the majority of heating and hot water needs.

The site lies within an 'area of outstanding natural beauty' and it was crucial that the design enhanced the setting rather than detract from the local character.

(cont...)

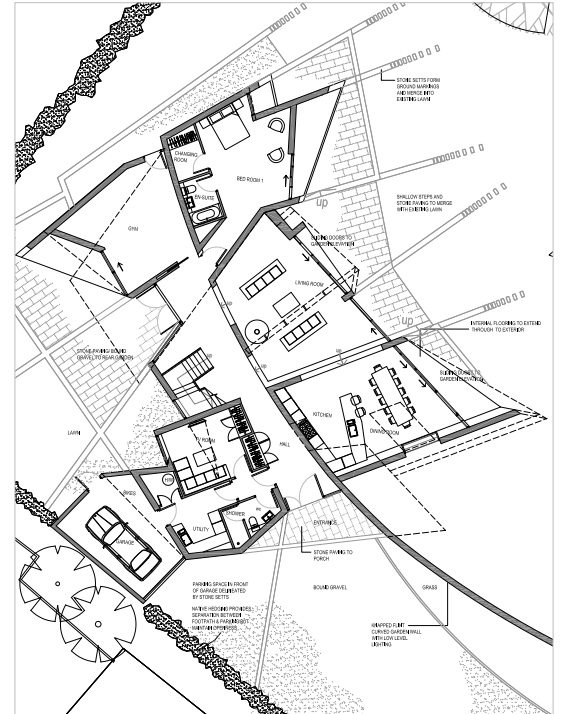
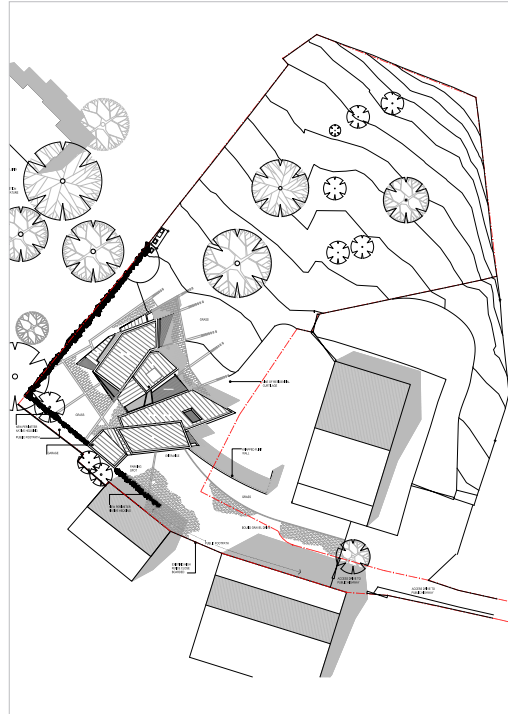


Badgers View Farm

LEWIS AND
HICKEY

The Planning permission contained the following statement:

“The proposed development is considered to incorporate a high standard of design, which will complement and respect the character and appearance of the surrounding area, with special regard to its location within the Chilterns Area of Outstanding Natural Beauty. It would not have a material impact on the residential amenities of neighbouring properties of local highway conditions”.



Badgers View Farm