

English International School

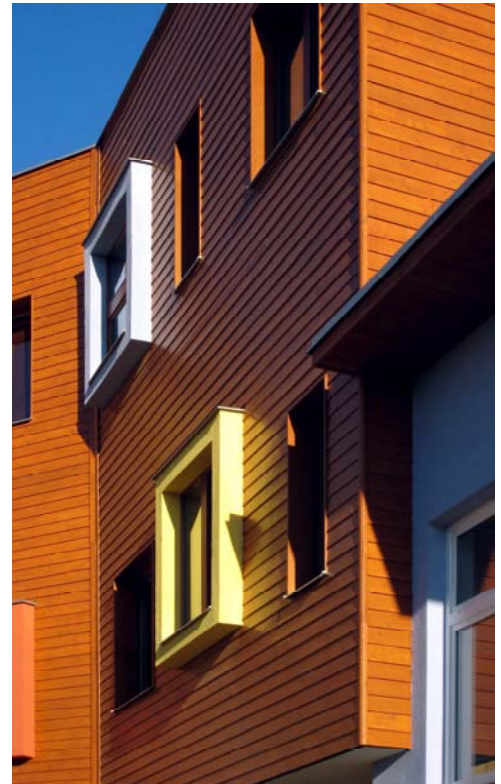
Work Sector
Client
Location
Cost
Date



Education
English International School
Prague
4 million
Completion 2008

The beginning of the school year in Prague saw the grand opening of a new private school for international students, which took place under the auspices of Her Royal Highness Princess Anne. After an opening speech the Princess visited the premises of the new campus. Later she took time to converse with the architects from Lewis & Hickey Praha about the most interesting aspects of the project.

The School decided to move from unsatisfactory buildings in Prague; Písnice, to a new-built school campus on a green site in Prague 4 Krè. L&H Praha prepared an architectural proposal and helped the client to find an optimal layout for the school, for 2–18 year olds. The secondary School building is situated along an existing road and acts as a barrier for the Primary School and the Nursery, orientated towards a large green open space in the southern end of the site. The design includes a sports hall, a multi-purpose hall and an internal atrium which also houses the school library.



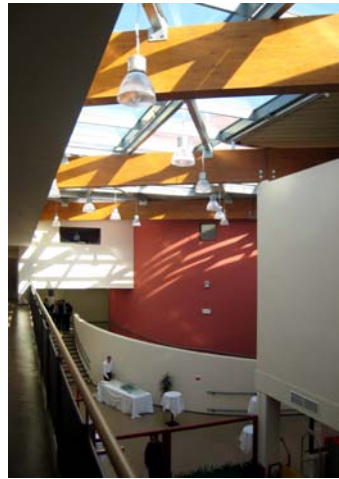
LEWIS AND
HICKEY

English International School



Work Sector
Client
Location
Cost
Date

Education
English International School
Prague
4 million
Completion 2008



Princess Margaret Opens the New English International School